

OPTIDRIVE™ E³


IP20 Cabinet Mount Drives

5 Frame Sizes

↑ 50HP

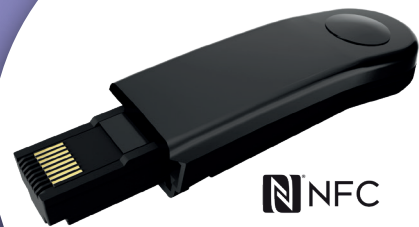


Compact, robust and reliable general purpose drive for panel mounting

- ✓ Conformal Coating - enhanced protection and reliability for arduous environments to 3C3 class
- ✓ Built in PI control, EMC filter (C1) & brake chopper
- ✓ Application macros for industrial, fan and pump operation
- ✓  Bluetooth® connectivity



Optistick Smart
Rapid commissioning tool




 **Bluetooth®**

HP	Amps	Frame	Model Code	Product Family	Generation	Frame Size	Voltage Code	Output Current	Supply Phases	EMC Filter	Brake Transistor	Enclosure Option	List Price
110 – 115V ± 10% 1 Phase Input	0.5	2.3	1	ODE - 3 - 1 - 1	0023 - 1	0	1	2	\$490.00				
	1	4.3	1	ODE - 3 - 1 - 1	0043 - 1	0	1	2	\$565.00				
	1.5	5.8	2	ODE - 3 - 2 - 1	0058 - 1	0	4	2	\$810.00				
200 – 240V ± 10% 1 Phase Input	0.5	2.3	1	ODE - 3 - 1 - 2	0023 - 1	F	1	2	\$455.00				
	1	4.3	1	ODE - 3 - 1 - 2	0043 - 1	F	1	2	\$525.00				
	2	7	1	ODE - 3 - 1 - 2	0070 - 1	F	1	2	\$640.00				
	2	7	2	ODE - 3 - 2 - 2	0070 - 1	F	4	2	\$795.00				
	3	10.5	2	ODE - 3 - 2 - 2	0105 - 1	F	4	2	\$880.00				
	5	15.3	3	ODE - 3 - 3 - 2	0153 - 1	0	4	2	\$1,510.00				
200 – 240V ± 10% 3 Phase Input	0.5	2.3	1	ODE - 3 - 1 - 2	0023 - 3	0	1	2	\$540.00				
	1	4.3	1	ODE - 3 - 1 - 2	0043 - 3	0	1	2	\$570.00				
	2	7	1	ODE - 3 - 1 - 2	0070 - 3	0	1	2	\$640.00				
	2	7	2	ODE - 3 - 2 - 2	0070 - 3	F	4	2	\$830.00				
	3	10.5	2	ODE - 3 - 2 - 2	0105 - 3	F	4	2	\$880.00				
	5	18	3	ODE - 3 - 3 - 2	0180 - 3	F	4	2	\$1,000.00				
	7.5	24	3	ODE - 3 - 3 - 2	0240 - 3	F	4	2	\$1,310.00				
	10	30	4	ODE - 3 - 4 - 2	0300 - 3	F	4	2	\$2,220.00				
	15	46	4	ODE - 3 - 4 - 2	0460 - 3	F	4	2	\$2,550.00				
	20	61	5	ODE - 3 - 5 - 2	0610 - 3	F	4	2	\$3,750.00				
	25	72	5	ODE - 3 - 5 - 2	0720 - 3	F	4	2	\$4,000.00				
	380 – 480V ± 10% 3 Phase Input	0.5	1.2	1	ODE - 3 - 1 - 4	0012 - 3	F	1	2	\$580.00			
1		2.2	1	ODE - 3 - 1 - 4	0022 - 3	F	1	2	\$670.00				
2		4.1	1	ODE - 3 - 1 - 4	0041 - 3	F	1	2	\$730.00				
2		4.1	2	ODE - 3 - 2 - 4	0041 - 3	F	4	2	\$850.00				
3		5.8	2	ODE - 3 - 2 - 4	0058 - 3	F	4	2	\$910.00				
5		9.5	2	ODE - 3 - 2 - 4	0095 - 3	F	4	2	\$1,030.00				
7.5		14	3	ODE - 3 - 3 - 4	0140 - 3	F	4	2	\$1,310.00				
10		18	3	ODE - 3 - 3 - 4	0180 - 3	F	4	2	\$1,620.00				
15		24	3	ODE - 3 - 3 - 4	0240 - 3	F	4	2	\$1,995.00				
20		30	4	ODE - 3 - 4 - 4	0300 - 3	F	4	2	\$3,200.00				
25		39	4	ODE - 3 - 4 - 4	0390 - 3	F	4	2	\$3,800.00				
30		46	4	ODE - 3 - 4 - 4	0460 - 3	F	4	2	\$4,310.00				
40		61	5	ODE - 3 - 5 - 4	0610 - 3	F	4	2	\$4,800.00				
50	72	5	ODE - 3 - 5 - 4	0720 - 3	F	4	2	\$5,850.00					

Enclosure Types



IP20

IP20



Size	1	2	3	4	5
in Height	6.8	8.7	10.3	16.5	19.1
in Width	3.3	4.3	5.2	6.7	8.7
in Depth	4.8	5.9	6.9	8.3	8.9
lb Weight	2.2	3.7	7.0	20.1	39.9
Fixings	4xM4	4xM4	4xM4	4xM4	4xM4

- F** Internal EMC Filter
- 0** No Internal EMC Filter
- 2** Cabinet mount
- 1** No internal brake
- 4** Internal brake included

Drive Specification

Input Ratings	Supply Voltage	110 – 115V ± 10% 200 – 240V ± 10% 380 – 480V ± 10%	Control Specification	Control Method	Sensorless Vector Speed Control PM Vector Control BLDC Control Synchronous Reluctance	Application Features	PI Control	Internal PI Controller Standby / Sleep Function			
	Supply Frequency	48 – 62Hz		PWM Frequency	4 – 32kHz Effective Ratings at 8 kHz		Fire Mode	Bidirectional Selectable Speed Setpoint (Fixed / PI / Analog / Fieldbus)			
	Displacement Power Factor	> 0.98		Stopping Mode	Ramp to stop: User Adjustable 0.1 – 600 secs Coast to stop		Maintenance & Diagnostics	Fault Memory	Last 4 Trips stored with time stamp		
	Phase Imbalance	3% Maximum allowed		Braking	Motor Flux Braking Built-in braking transistor (not frame size 1)			Data Logging	Logging of data prior to trip for diagnostic purposes: Output Current Drive Temperature DC Bus Voltage		
	Inrush Current	< rated current		Skip Frequency	Single point, user adjustable			Monitoring	Hours Run Meter		
	Power Cycles	120 per hour maximum, evenly spaced		Output Ratings	Fieldbus		Setpoint Control	Analog Signal	0 to 10 Volts 10 to 0 Volts 0 to 20mA 20 to 0mA 4 to 20mA 20 to 4mA	Standards	Low Voltage Directive
Ambient Conditions	Temperature	Storage: -40 to 140°F (-40 to 60°C) Operating: -4 to 122°F (-20 to 50°C)	Digital			Motorised Potentiometer (Keypad) Modbus RTU CANopen		EMC Directive	2014/30/EU Cat C1 according to EN61800-3:2004		
	Altitude	Up to 3280.84ft ASL without derating Up to 6561.68ft maximum UL approved Up to 13123.36ft maximum (non UL)	Built-in			CANopen 125 – 1000 kbps Modbus RTU 9.6 – 115.2 kbps selectable	Machinery Directive	2006/42/EC			
	Conformal Coating	3C3 class	Optional			Ethernet IP with external module OPT-2-ETHEG-IN	Conformance	CE, UL, C-Tick			
Humidity	95% Max, non condensing	I/O Specification	Power Supply			24 Volt DC, 100mA, Short Circuit Protected 10 Volt DC, 10mA for Potentiometer	Programmer Inputs	4 Total 2 Digital 2 Analog / Digital selectable	Environmental Class		3C3/3S3 conformal coated PCBs
Vibration	Conforms to EN61800-5-1					Analog Inputs		Resolution: 12 bits Response time: < 4ms Accuracy: ± 2% full scale Parameter adjustable scaling and offset			Programmer Outputs
Enclosure	Ingress Protection			IP20 Cabinet Mount	Relay Outputs			Maximum Voltage: 250 VAC, 30 VDC Switching Current Capacity: 6AAC, 5A DC			
	Keypad			Built-in keypad as standard Optional remote mountable keypad				Analog Outputs		0 to 10 Volt	
Programming	Display			7 Segment LED		PC				OptiTools Studio	

Contact us to discuss
availability & pricing

sales@invertekdrives.com

847-549-3669